



HEAD OFFICE AWARENESS FOR INTEGRATION AND STOCK MANAGEMENT

The Ronin ART Head Office Server (H.O.S) augments the ART system by enabling the user to manage silos and flat warehouses, stockpiles and relating information under management from a single work station.

ART H.O.S allows the incorporation of all transactional data, including grading, such as bulk densities and moisture, to be acknowledged from each batch received and then apply the respective weighted average data to each relative silo, warehouse or stockpile.

ART H.O.S makes head office awareness a reality and enables the monitoring of all actions taking place on multiple sites.

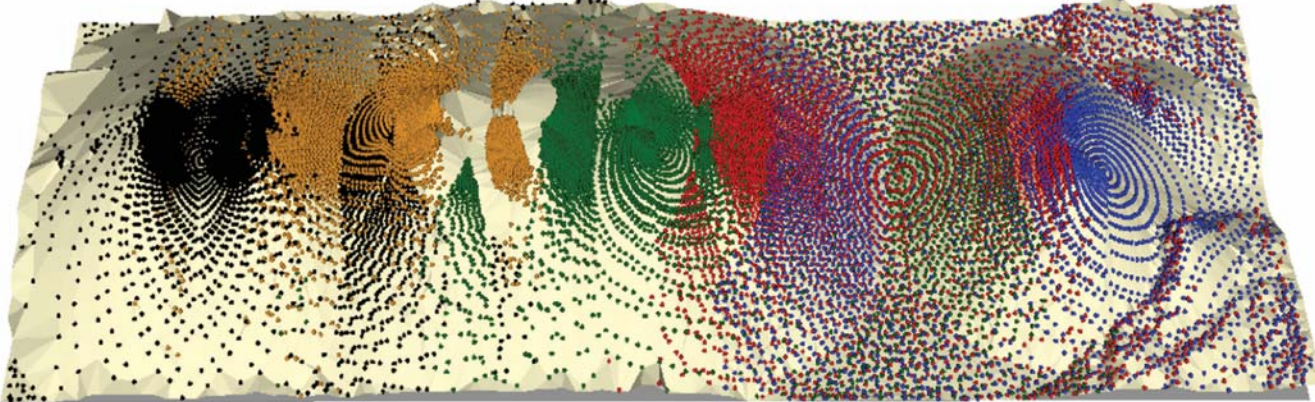
ART+  
ART TRANSCAT BIN INFORMATION CHART  
Bin Information Chart  
Last Update: 27/08/2010 07:00

Site Code: 493  
Site Name: Last Book Update: 26/08/2010 23:00

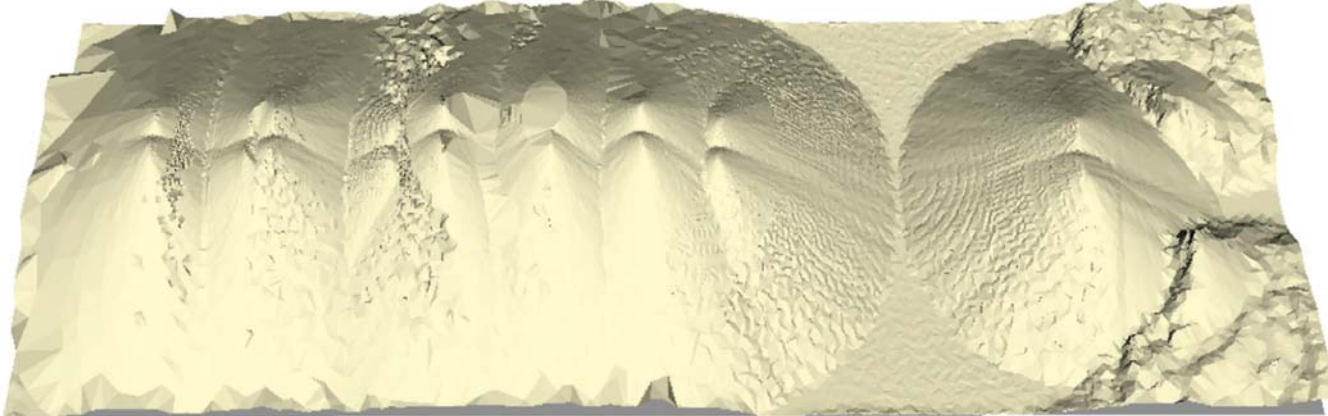
Today: 8/23/2009 7:00  
8/25/2009 7:00

Bin #	Grain Type	Grain Grade	Occupied Volume Today	Average Bulk Density	Mass Today	Available Capacity at B.O.	Percentage Full	Average Moisture	Average Screensings	Average Protein	Average Test Seconds	Area of Bin (m²)
A1	Soya Beans	S8	1,536	0.739	2,557	1,038	71.1%	12.1%	2.1%	32.2%	22.457	
A2	Soya Beans	S8	1,042	0.724	755	2,865	26.8%	12.6%	4.1%	30.0%	35.654	
B10	Sunflower	PH	1,134	0.884	912	460	44.1%	9.8%	1.3%	0.0%	22.101	
B11	White Maize	WM1	79	0.768	61	2,243	2.6%	12.4%	2.3%	0.0%	48.300	
B12	Wheat	W1	165	0.780	129	2,223	5.8%	12.4%	1.3%	10.0%	47.689	
B13	Yellow Maize	YM1	711	0.781	554	1,787	31.0%	12.4%	2.3%	0.0%	34.658	
B14	Wheat	W1	1,132	0.732	1,050	1,058	93.6%	12.4%	1.3%	8.0%	26.647	
B3	Sunflower	PH	497	0.847	421	918	45.8%	9.8%	0.9%	0.0%	47.654	
B4	Soya Beans	S8	206	0.736	151	2,207	6.8%	12.0%	2.1%	34.0%	48.107	
B5	Yellow Maize	YM1	1,435	0.765	1,098	1,297	84.8%	12.8%	3.1%	0.0%	27.650	
B6	Yellow Maize	YM1	37	0.772	29	2,284	1.2%	12.3%	2.8%	0.0%	49.570	
B7	White Maize	WM1	1,400	0.776	1,086	1,262	77.6%	12.4%	2.6%	0.0%	26.108	
B8	Empty Bin		0	0	0	0.0%	0.0%	0.0%	0.0%	0.0%	50.000	
B9	Sorghum	SG1	882	0.852	751	2,309	32.5%	12.3%	2.1%	0.0%	47.560	
C23	Sunflower	PH	140	0.836	117	299	39.1%	9.9%	0.8%	0.0%	49.200	
C14	Wheat	W1	144	0.732	105	897	20.4%	12.7%	4.3%	8.0%	48.764	
C25	Soya Beans	Screensings	12	0.745	9	159	7.4%	12.1%	100.0%	26.0%	49.500	
D86	Empty Bin		0	0	0	0.0%	0.0%	0.0%	0.0%	0.0%	50.000	
D27	Sorghum	G DO	379	0.792	296	300	74.7%	12.1%	6.9%	0.0%	46.873	
E15	Wheat	W1	82	0.736	61	6,204	1.2%	12.0%	0.7%	11.0%	49.774	
E16	Sunflower	PH	6,653	0.854	2,855	406	85.3%	9.9%	2.1%	0.0%	10.783	
E17	Wheat	W1	115	0.745	86	5,725	1.5%	12.7%	1.0%	10.4%	288	
E18	Wheat	W1	3,442	0.784	2,699	3,417	78.4%	12.5%	2.1%	11.4%	301	
E19	Wheat	W1	686	0.724	492	5,365	9.2%	12.0%	1.1%	10.2%	274	
E20	Wheat	W1	5,772	0.780	4,513	1,539	74.0%	12.8%	1.5%	11.1%	239	
E21	Wheat	W1	3,107	0.797	2,477	3,740	66.2%	12.8%	0.7%	12.4%	295	
E22	Soya Beans	S8	1,927	0.734	1,405	1,875	78.0%	12.4%	3.2%	34.6%	23.420	

Above: One of various Reports available is the "Bin Information Chart".



Above: Incorporated ARTEMIS scan showing data plot points of 5 individual ARTEMIS laser scanners.



Above: Processed ARTEMIS scan reflecting accurate volume within flat warehouse.



RONIN GRAIN MANAGEMENT SOLUTIONS  
1 Nobel Avenue, P.O. Box 556, Modderfontein, 1645, RSA.  
Tel: +27 (0) 11 608 3666 Fax: +27 (0) 11 608 4679  
office@roningms.com www.roningms.com

RONIN PRECISION FARMING SYSTEMS  
1 Nobel Avenue, P.O. Box 556, Modderfontein, 1645, RSA.  
Tel: +27 (0) 11 608 3666 Fax: +27 (0) 11 608 4679  
office@roninpfs.com www.roninpfs.com

RONIN INVENTORY MANAGEMENT SYSTEMS  
Suite 20, Quay Walk Building. Tuzi Gazi Waterfront. Richards Bay. South Africa.  
P.O. Box 101825. Meerensee. 3901.  
Tel: +27 (0) 35 788 0600/1 Fax: +27 (0) 35 788 0602  
office@roninims.com www.roninims.com

RONIN LATIN AMERICA  
Uruguay 2602, 2 Piso Ofc. 6. Beccar - Prov. Bs.As. CP 1643.  
Tel: (011) 5648 6848 Fax: (011) 5648 6446  
ronin@roninarg.com.ar www.roninarg.com.ar

RONIN SOLUTIONS  
A quick guide



INVENTORY

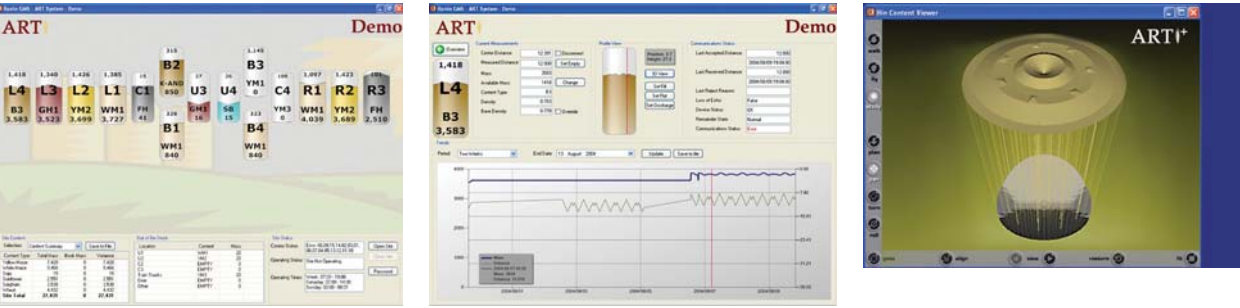
WE PROVIDE THE FOLLOWING SOLUTIONS  
BULK COMMODITY INVENTORY MANAGEMENT / PROCESS & QUALITY CONTROL (NIR/NIR-FT-NIR/CAPACITANCE)  
QUANTITY SURVEYING AND MOMENT-IN-TIME AUDITS / PRECISION FARMING  
YIELD MONITORING, WEIGH LOAD MANAGEMENT & CAMERAS AND ALERTS.



SILOS & BINS

ART has been developed over the past 10 years to originally be installed in grain silo bins and deliver a real-time knowledge of quantity and quality inside grain bins. Further developments saw the ART system being integrated over wide area networks and collating remote facilities data to a real-time head office element.

Today we offer this solutions throughout southern Africa as well as internationally to the milling, mining and industrial sectors. One of the largest grain handling & storage companies in South Africa had ART systems installed in 65 grain silo facilities and now has the ability to source complete stock positions at the click of a button. Alternatively ART+ scans along a single axis and delivers a accurate profile on over-sized bins where even small profile deviations translate into thousands of tons.



Above: ART Site Overview Screen

Above: ART Single Bin History Page

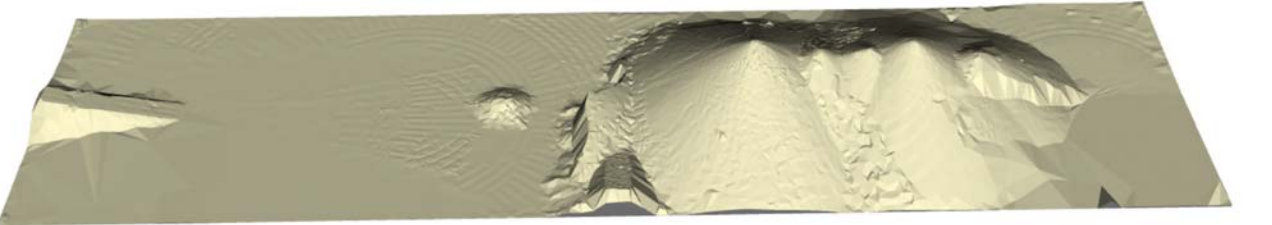
Above: ART+ 3D Profile Screen

BINS, BUNKERS, WAREHOUSES & STOCKPILES

Since not all commodities are stored in silos we introduced our ARTEMIS scanning laser systems to commodity handlers using flat warehouses. ARTEMIS offers great flexibility in design to accommodate a huge variety of layouts and warehouse designs including open to air stock piles. Various ARTEMIS scanning lasers can be used in conjunction or individually to cover profiles with great accuracy in oversized bins and generate accurate 3D profile in flat warehouses.



Above: Profile scan of a 30m diameter bin at various stages during storage.

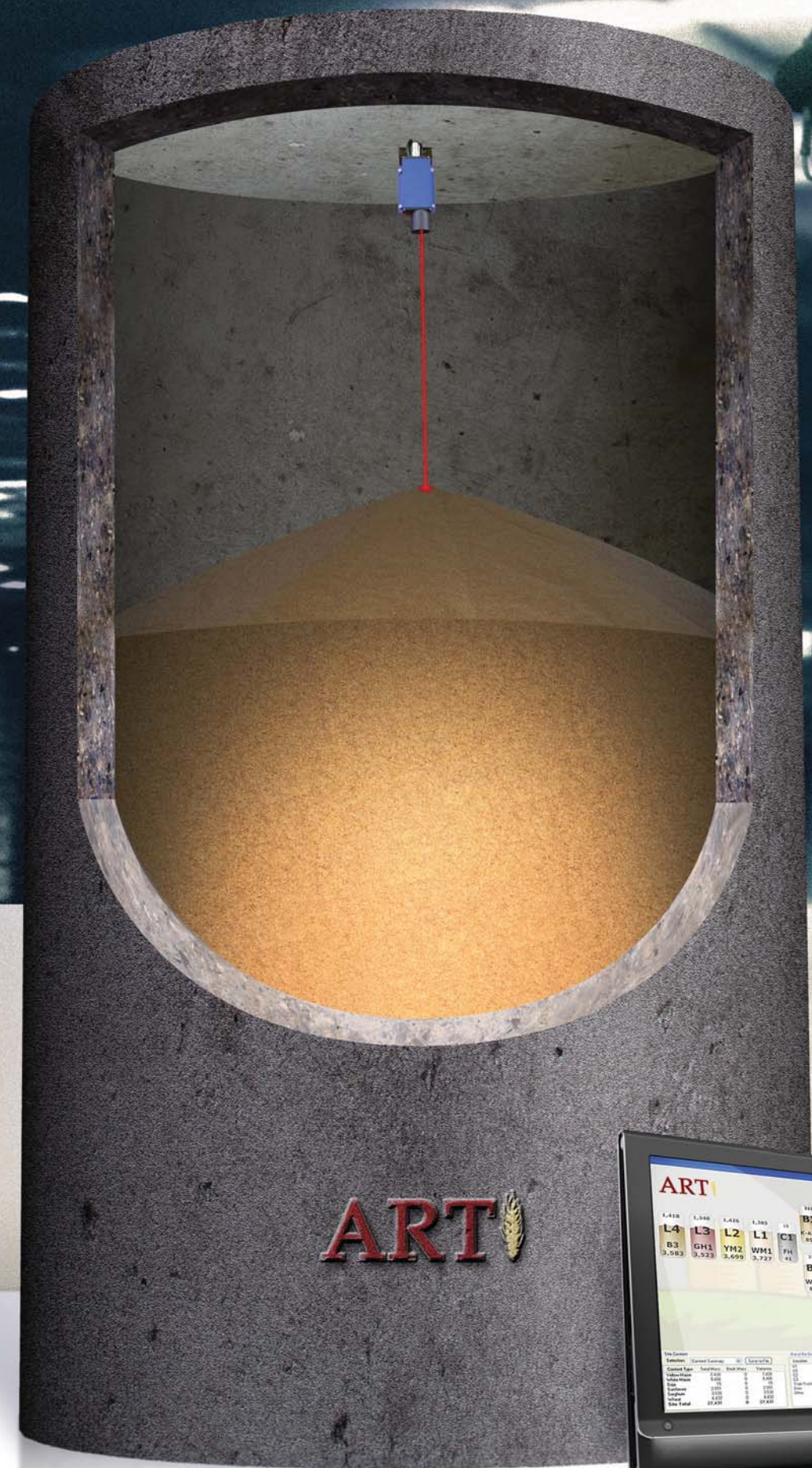


Above: Profile scan of a 150m long x 45m diameter flat warehouse containing soya meal.



# Ronin®

Artemis  
Laser Scanning System



ART



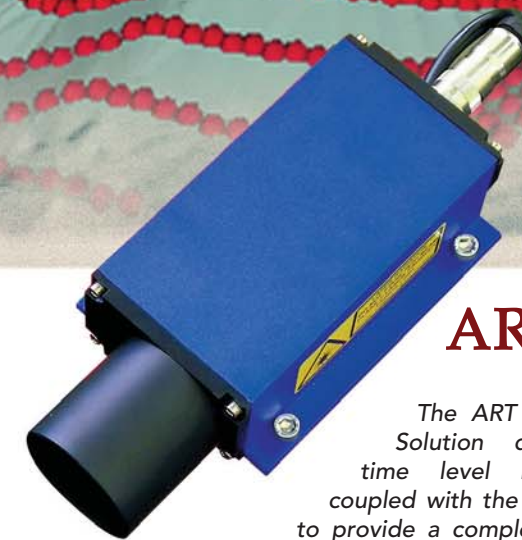
Artemis®  
Laser Scanning System

The Artemis Laser Scanning System is ideal for oversized silo bins, Bunkers and warehouses and open to air commodity stock piles. Artemis is a Multi-Axis scanner that produces highly accurate 3D profiles that are ideal for volume and mass calculations.



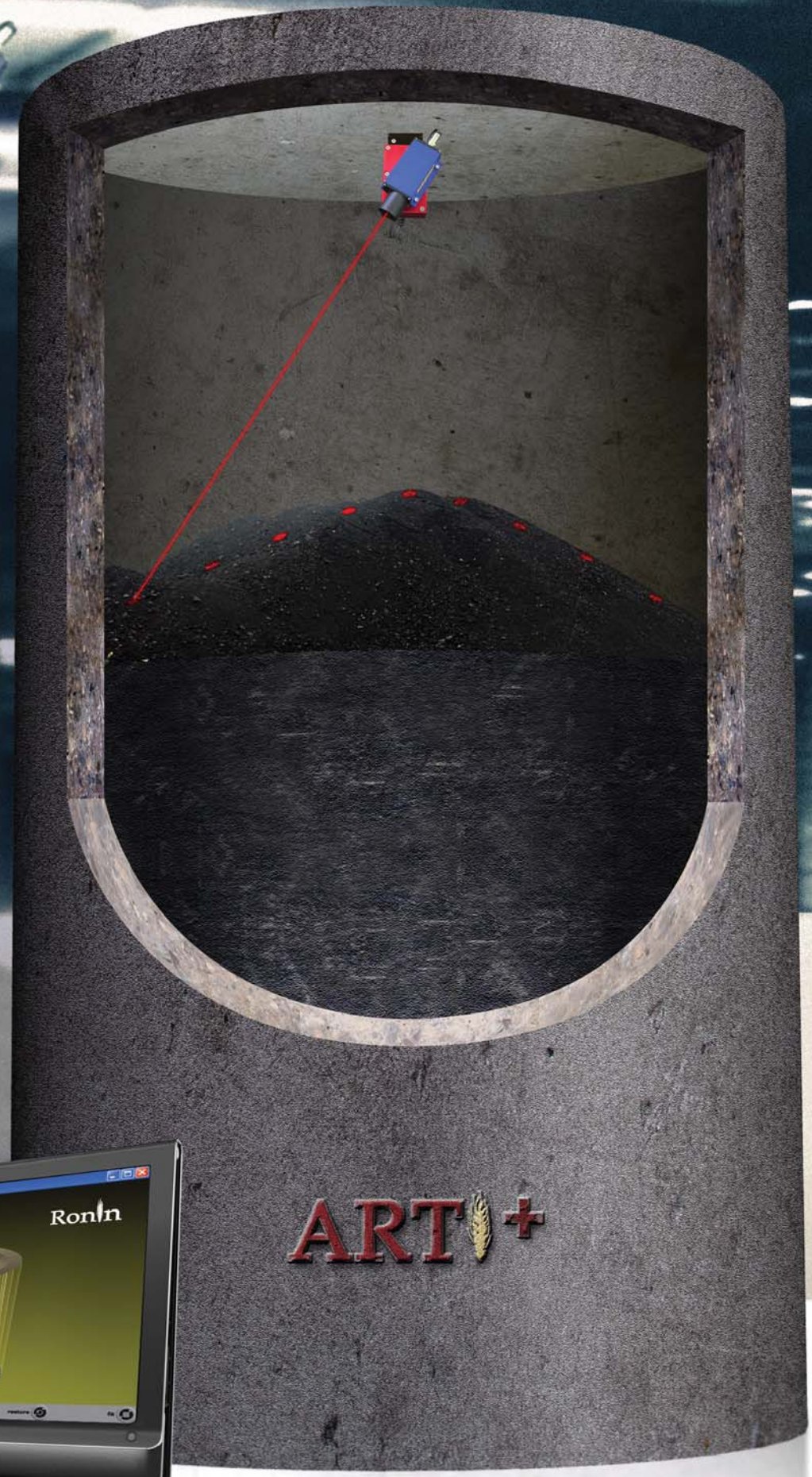
ART+®

The ART+ Solution is best for large silo bins where a more precise profile is required in order to insure greater accuracy. The ART+ Solution is a single axis scanner that scans along a straight vector to record bin profiles with greater accuracy.



ART®

The ART Single Point Solution delivers real time level measurement coupled with the ART software to provide a complete inventory management solution.



ART+®